

臺灣桃園國際機場
TAIPEI/TAIWAN TAOYUAN INTL AD

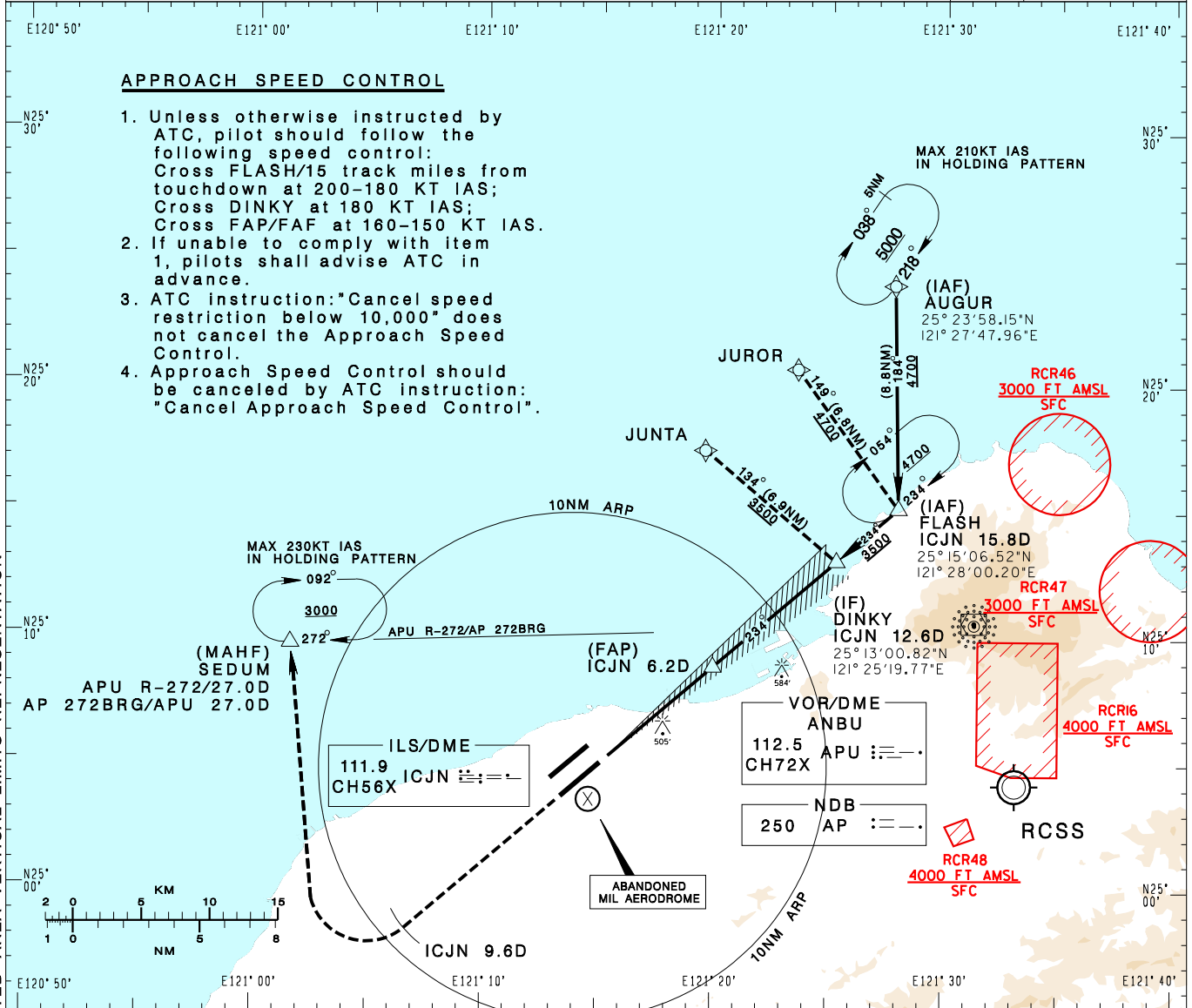
RCTP
ILS RWY23L

TAIPEI APP 125.1 128.5 125.6	TAIPEI TWR 118.7 129.3	ATIS 127.6	VAR 5° W 	
Apt Elev: 108'	Rwy23L DTHR Elev: 96'	Trans Level: FL130		Trans Alt: 11,000'
BEARINGS ARE MAGNETIC; DISTANCES ARE NAUTICAL MILES; ELEVATIONS, HEIGHTS IN FEET				

APPROACH SPEED CONTROL

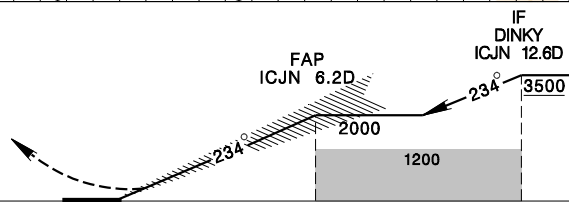
- Unless otherwise instructed by ATC, pilot should follow the following speed control:
Cross FLASH/15 track miles from touchdown at 200-180 KT IAS;
Cross DINKY at 180 KT IAS;
Cross FAP/FAF at 160-150 KT IAS.
- If unable to comply with item 1, pilots shall advise ATC in advance.
- ATC instruction: "Cancel speed restriction below 10,000" does not cancel the Approach Speed Control.
- Approach Speed Control should be canceled by ATC instruction: "Cancel Approach Speed Control".

CHANGES: NEW PAGE NUMBER, UPDATE RESTRICTED AREA VERTICAL LIMITS REPRESENTATION



MISSED APCH:
CLIMB ON HDG 234 UNTIL ICJN 9.6D,
THEN TURN RIGHT DIRECT TO SEDUM,
MAINTAIN 3000 AND HOLD.

GP 3°
RDH 55



NM FROM ICJN

MINIMA (OCA IN FT, VIS IN M, OCH IN FT)

CATEGORY	A	B	C	D
STRAIGHT IN	297/800 RVR550 201	309/800 RVR550 213	317/800 RVR550 221	327/800 RVR550 231
STRAIGHT IN (TDZ/CL LGT OUT)	297/800 RVR750 201	309/800 RVR750 213	317/800 RVR750 221	327/800 RVR750 231
STRAIGHT IN (ALS OUT)	297/1200 RVR1200 201	309/1200 RVR1200 213	317/1200 RVR1200 221	327/1200 RVR1200 231
CIRCLING	880/1900 772	930/2800 822	1030/4400 922	1030/4800 922

NOTE
1. CIRCLING NOT AUTHORIZED
SOUTHEAST OF RWY 05R/23L.
2. ATS SURVEILLANCE REQUIRED
FOR AUGUR TO FLASH AND
MISSED APCH SEGMENTS.

*DME REQUIRED.